

1. Table of Contents (This Page)

Created on Thu Apr 20 07:41:27 2017

2. top

3. bottom

4. outline

5. plated-drill

6. unplated-drill

7. componentmask

8. soldermask

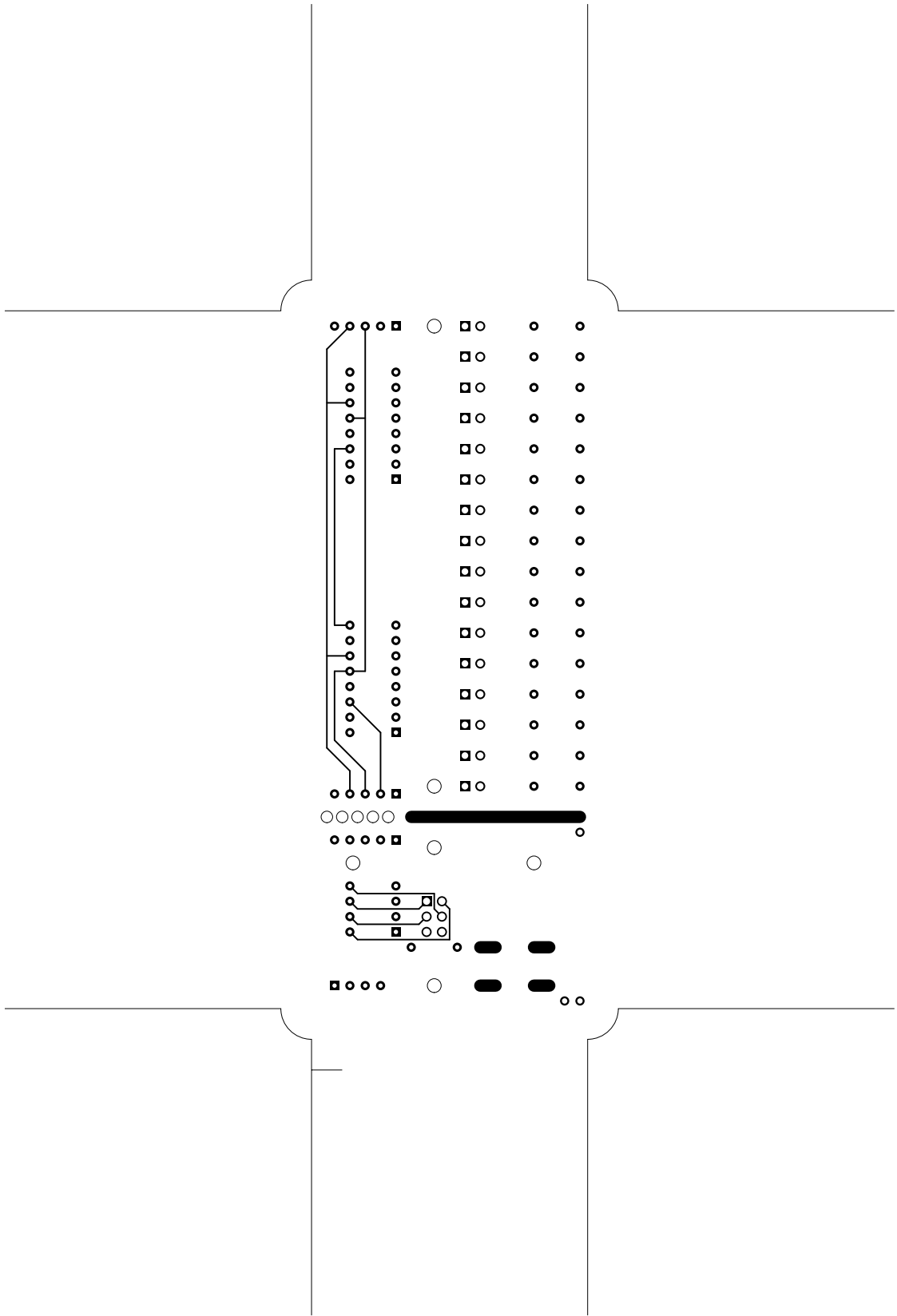
9. topsilk

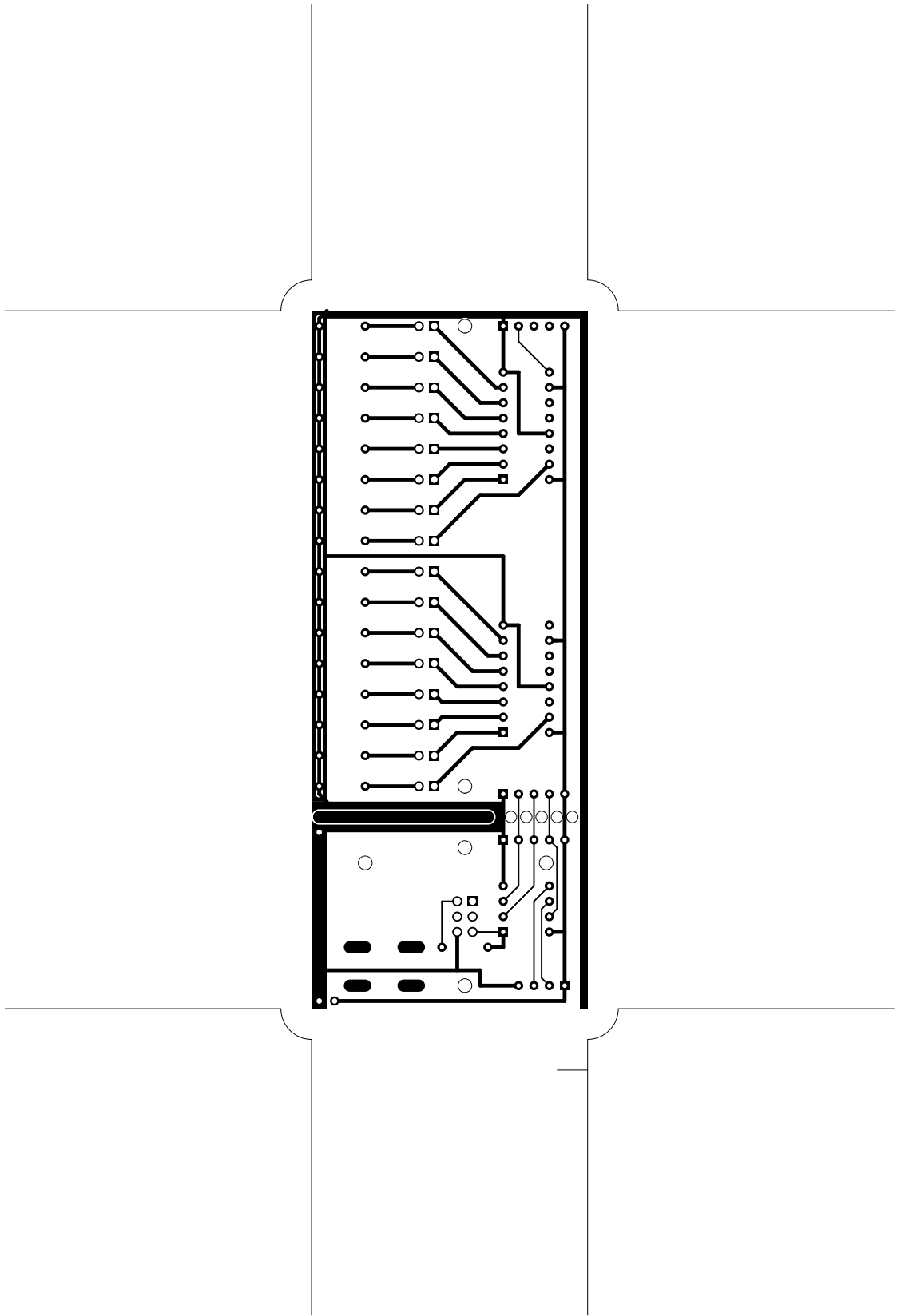
10. bottomsilk

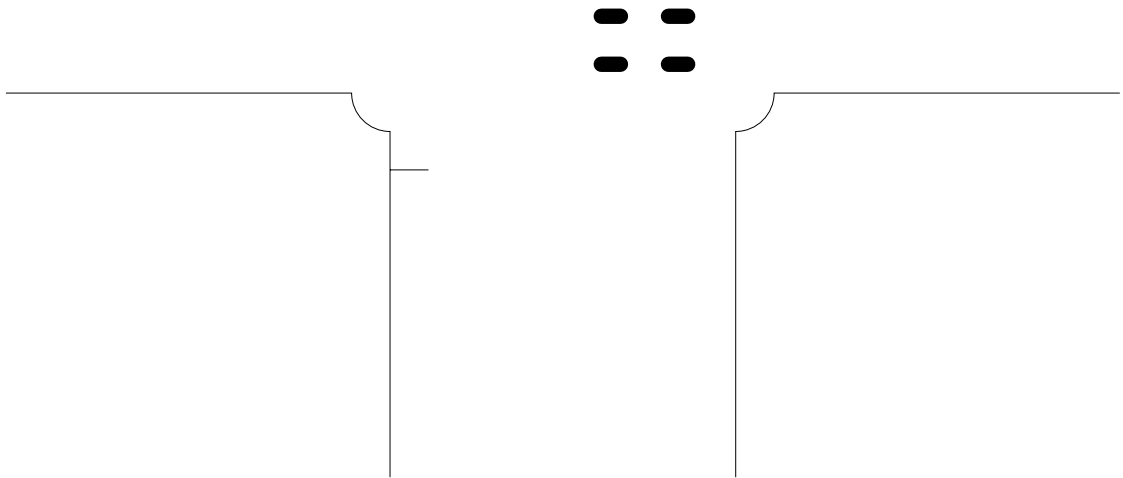
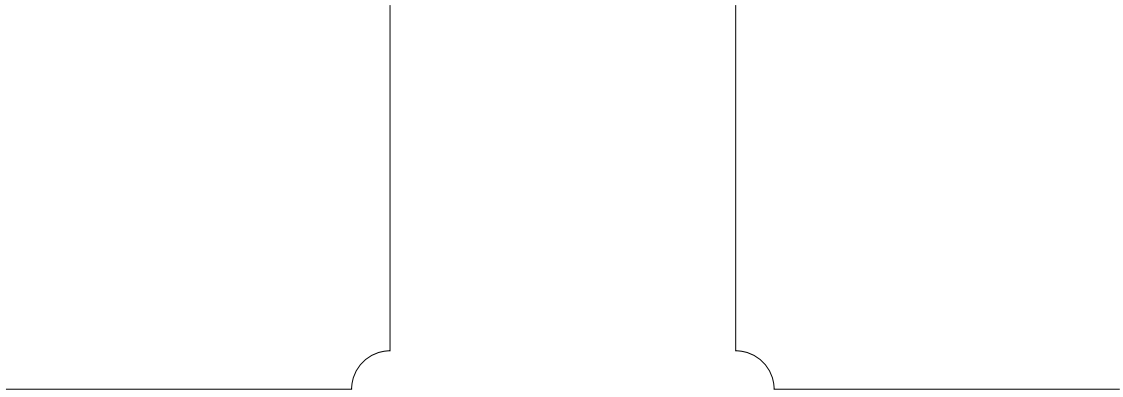
11. topassembly

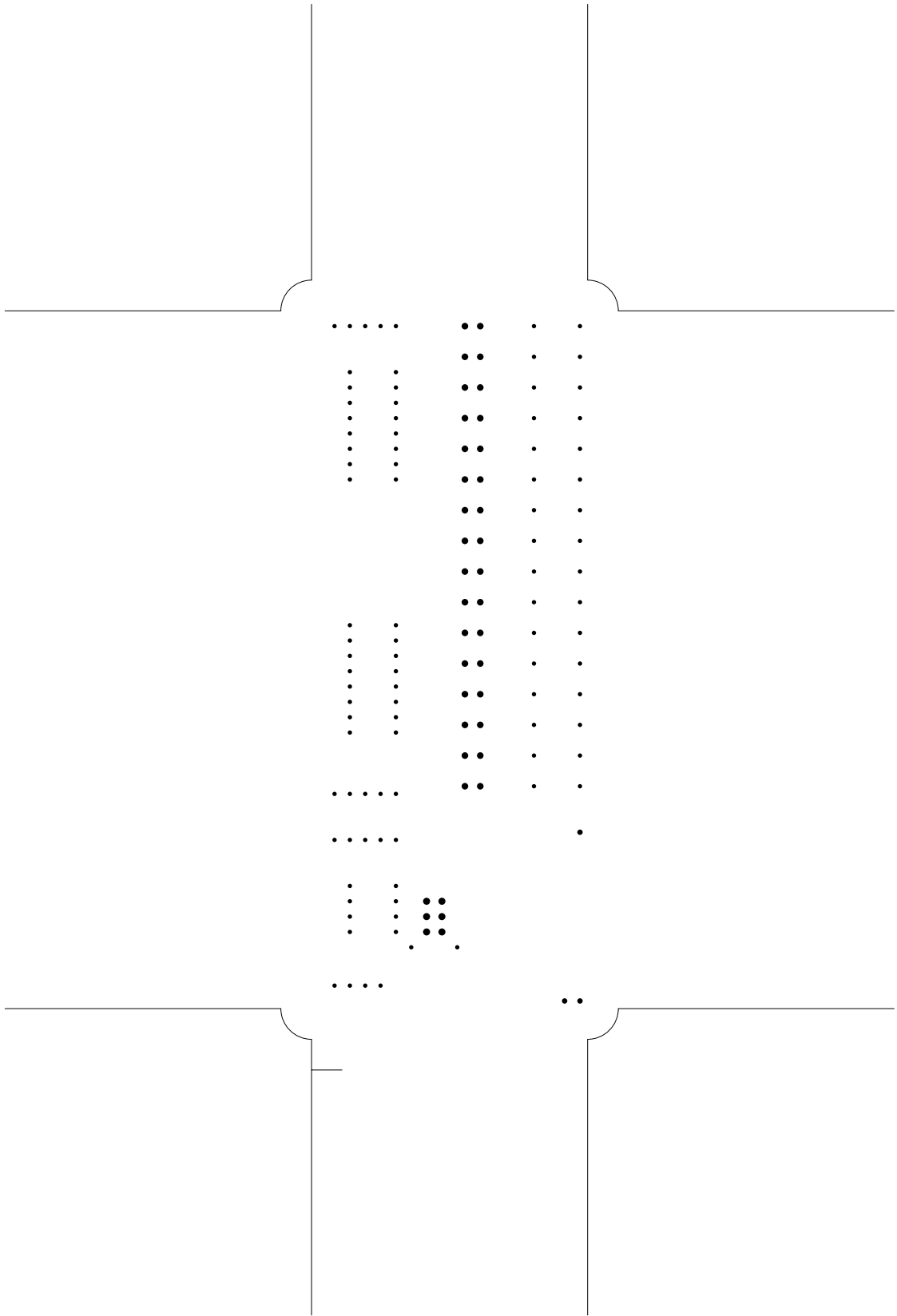
12. bottomassembly

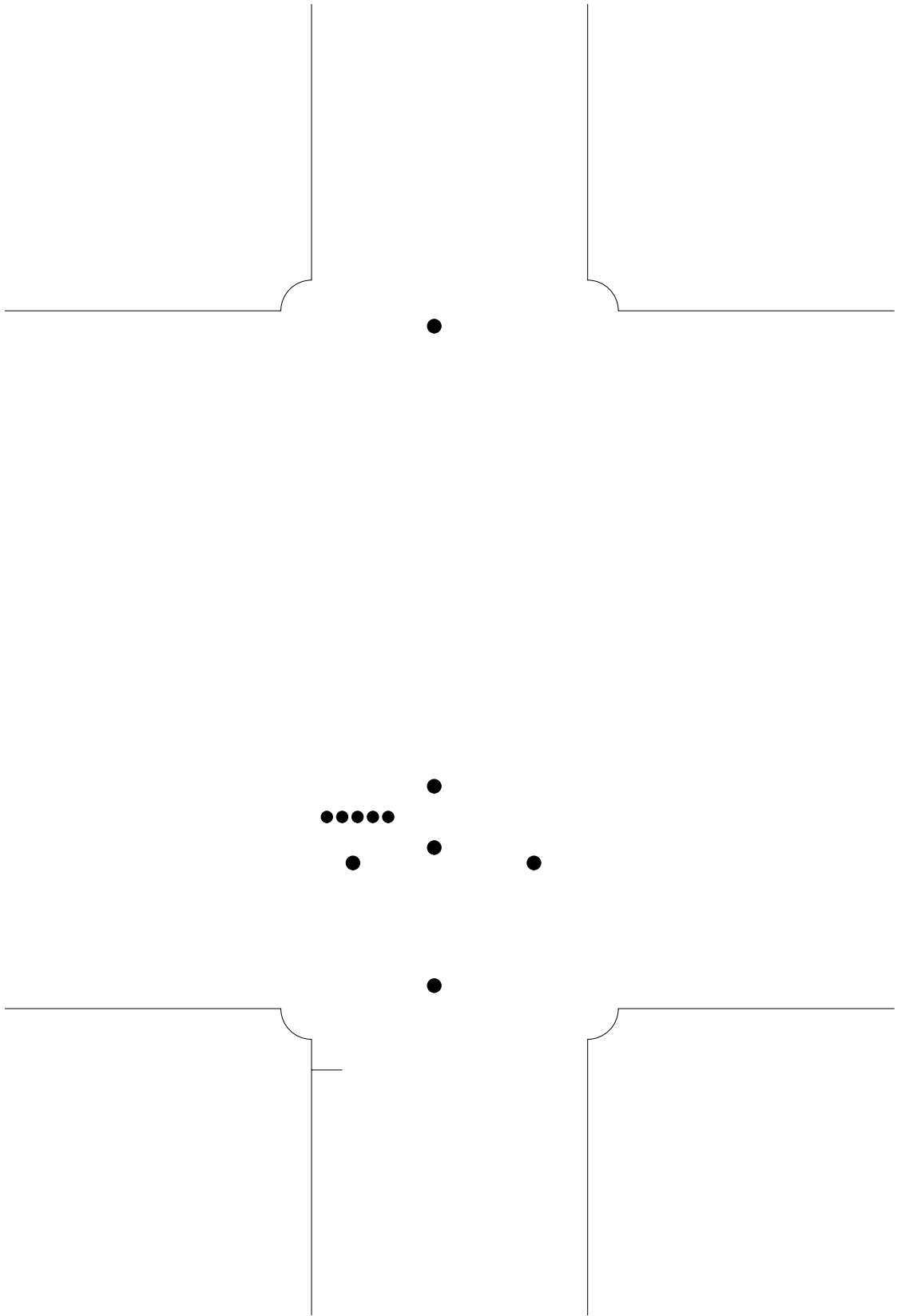
13. fab

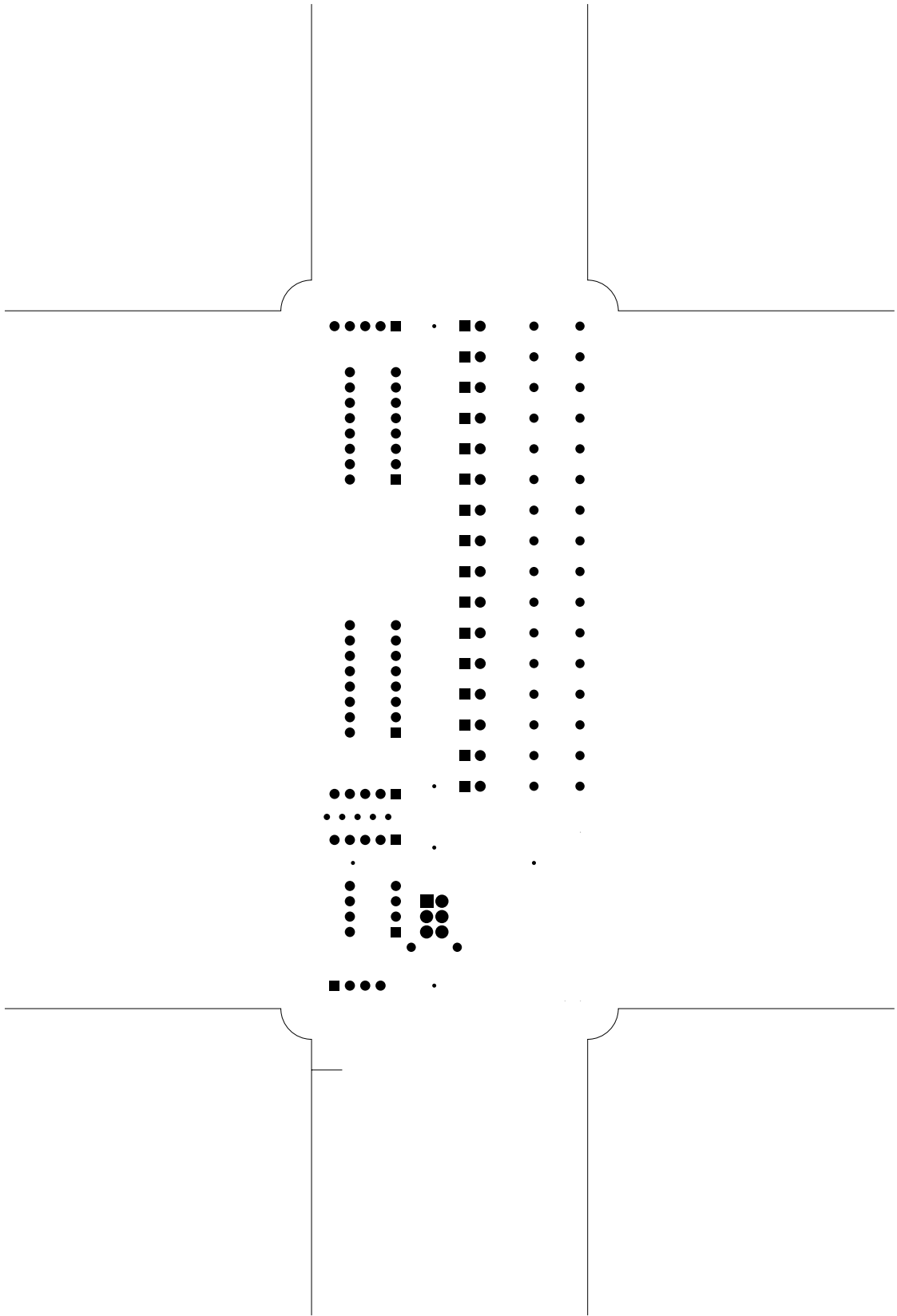


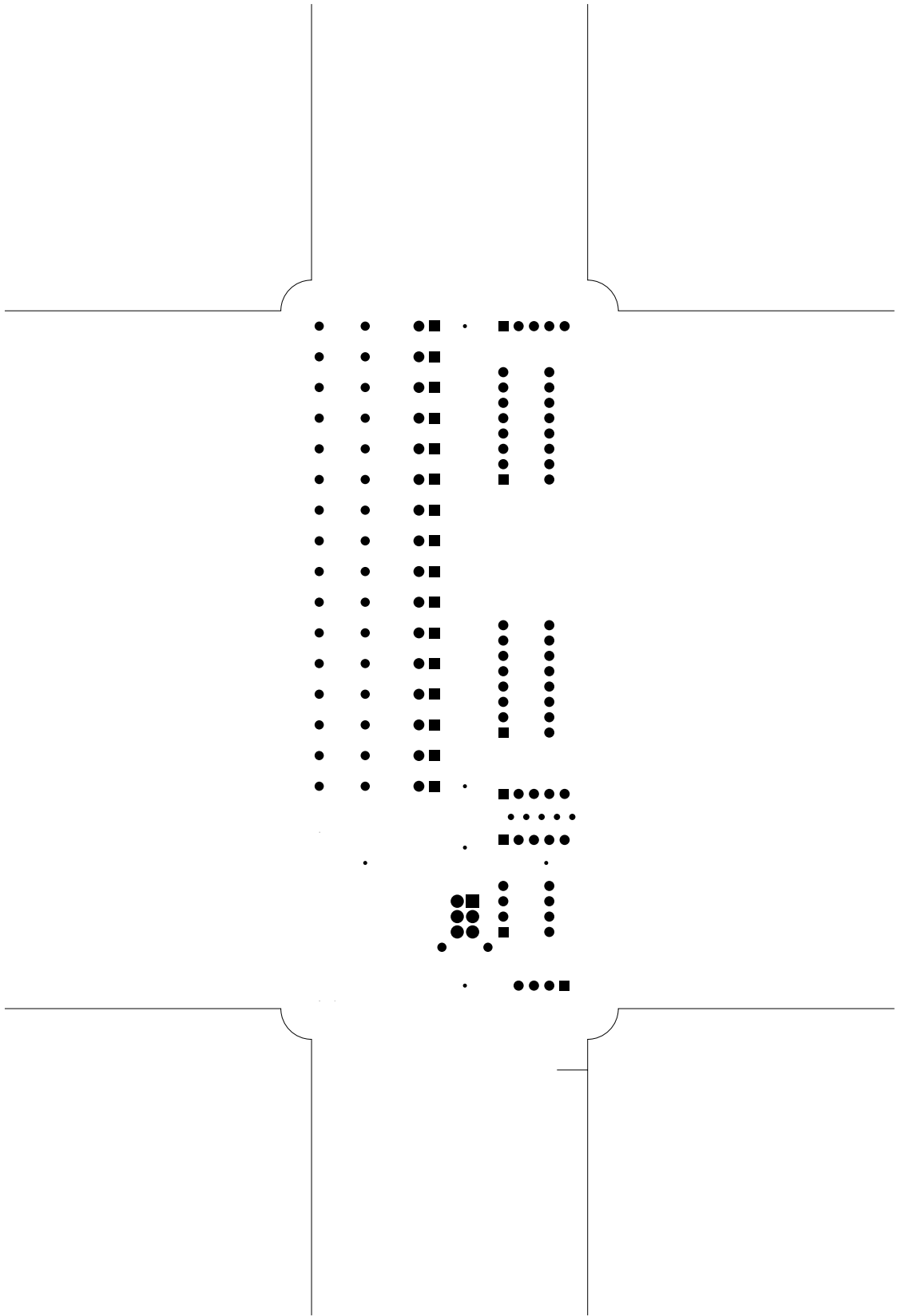


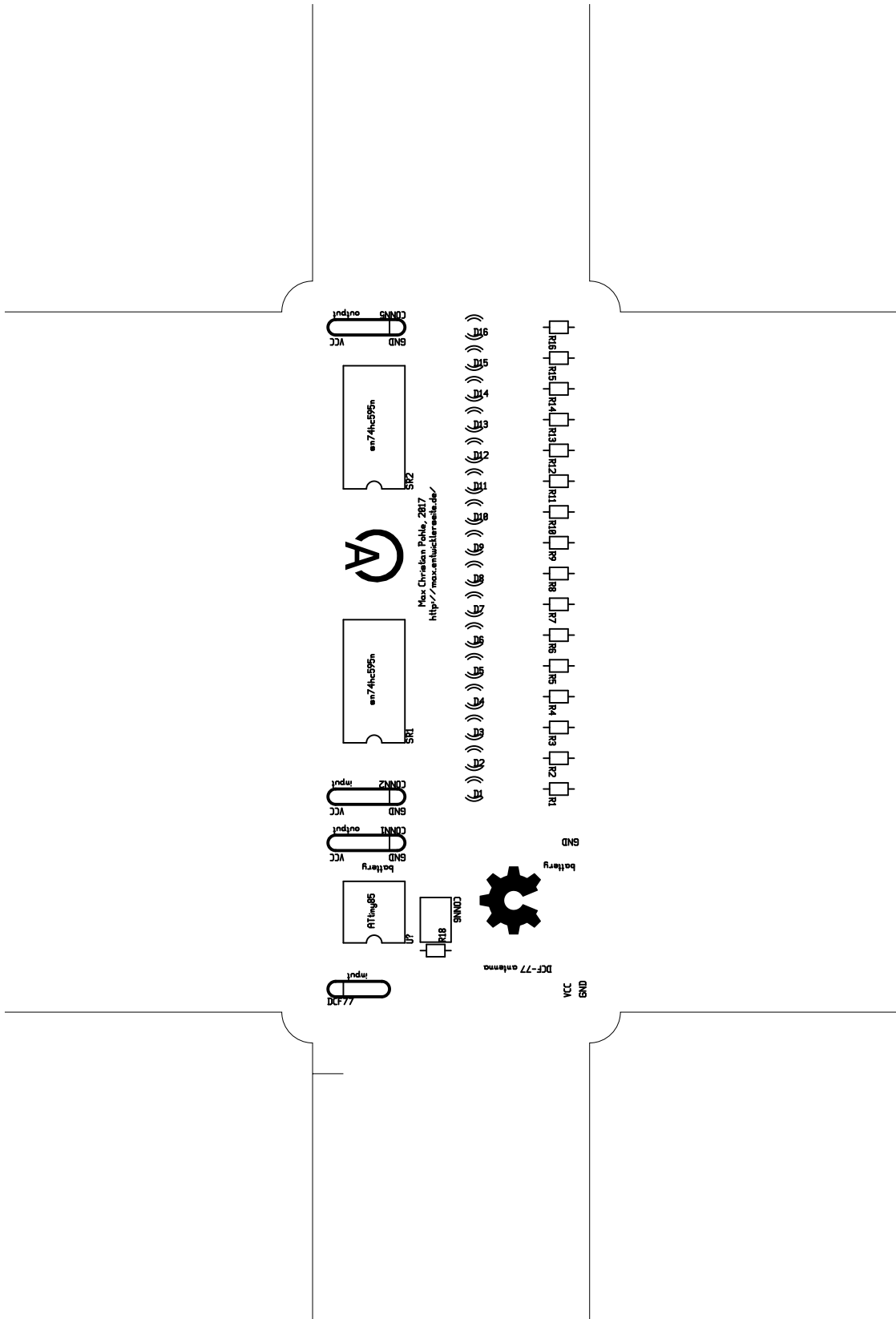


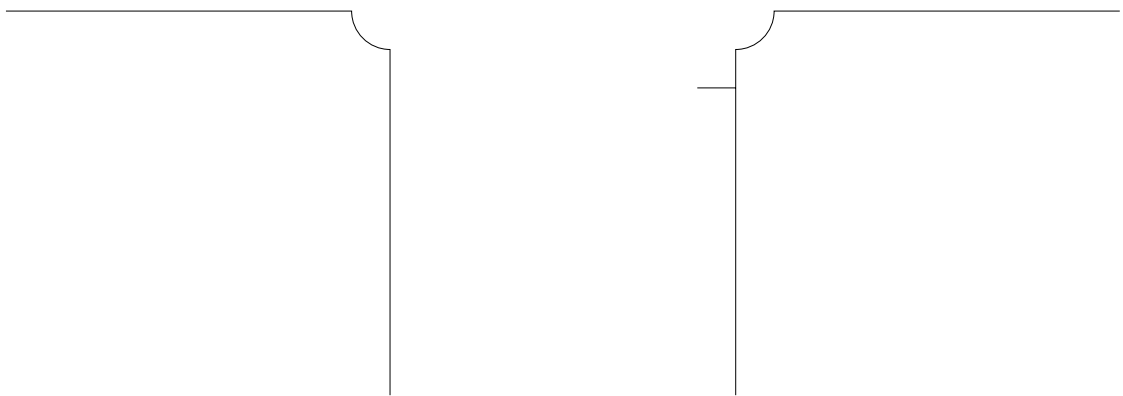
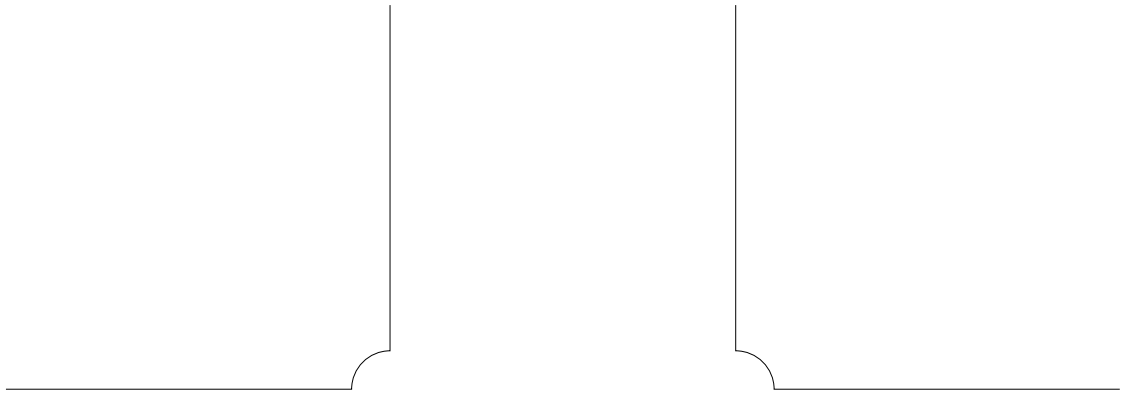


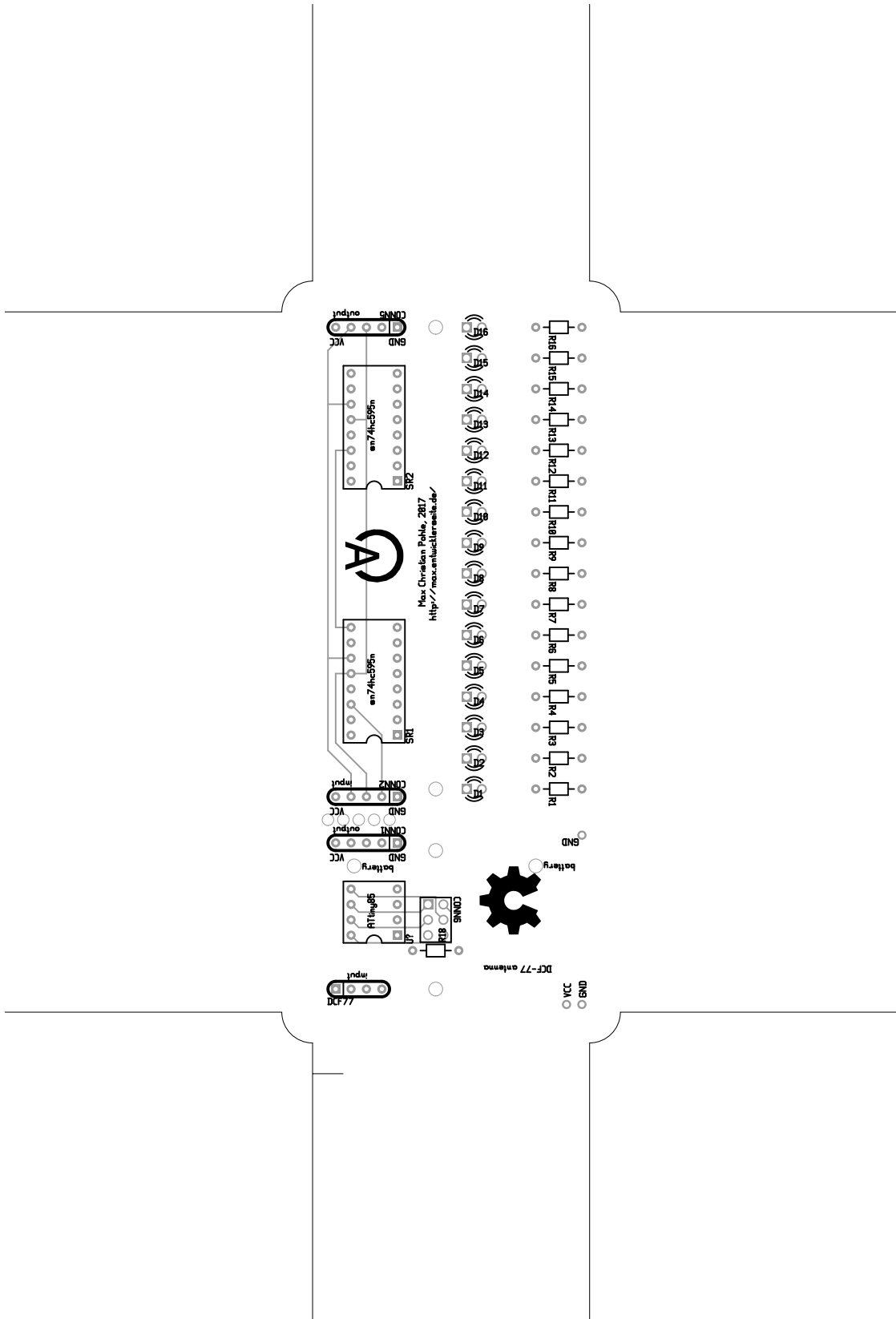


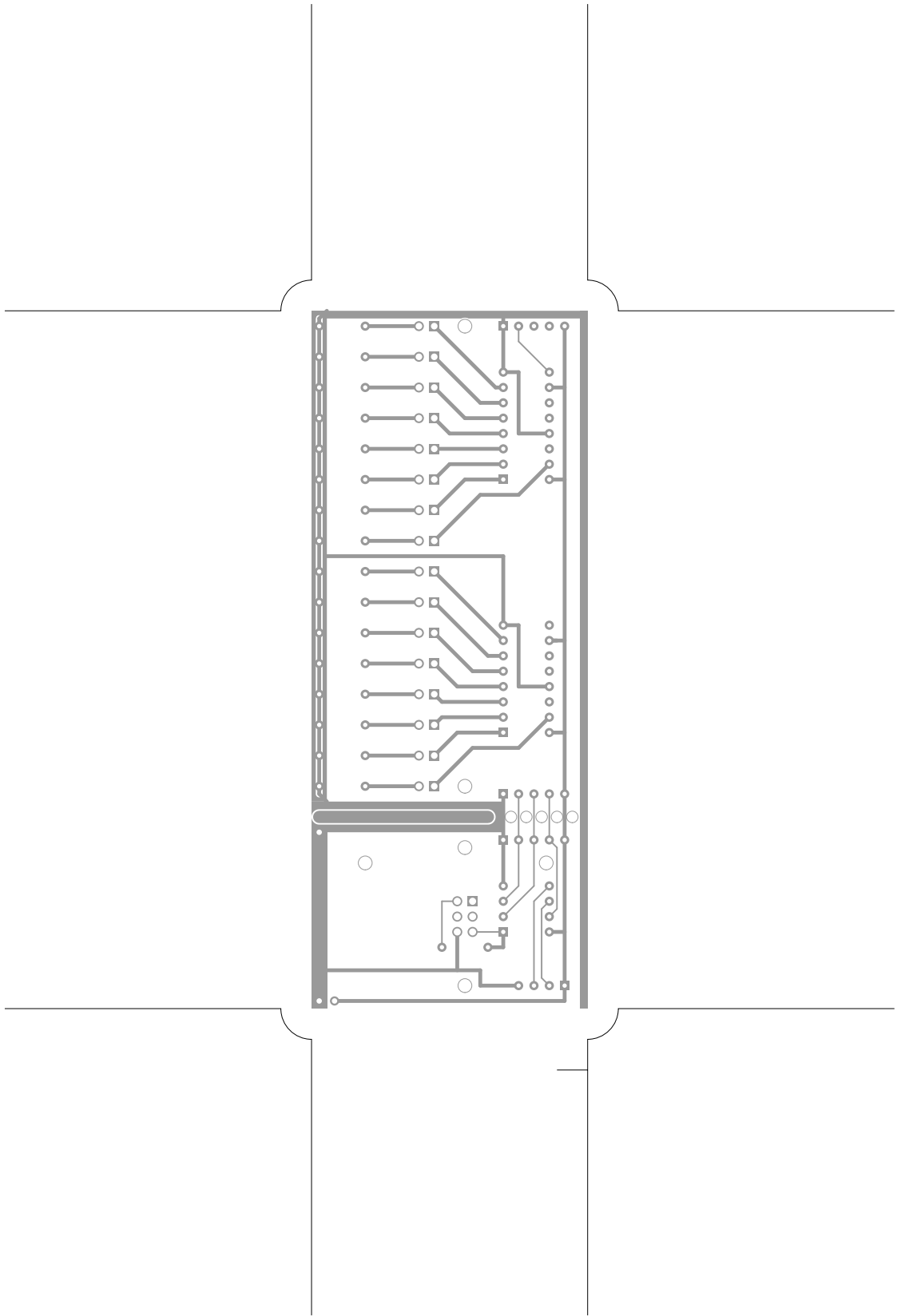








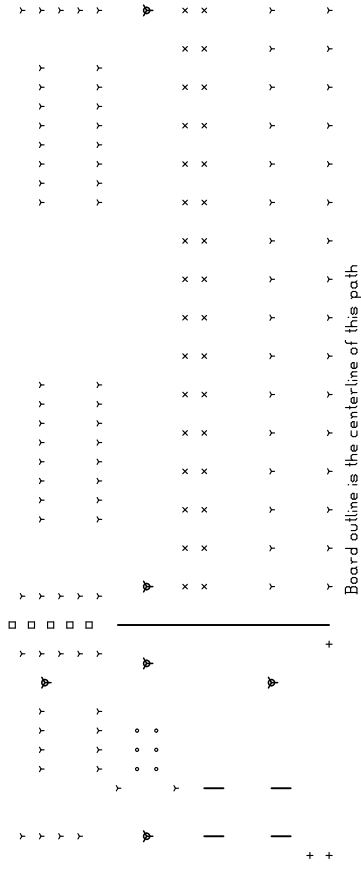




There are 6 different drill sizes used in this layout, 145 holes total

Symbol	Diam. (Inch)	Count	Plated?
Y	0.028	93	YES
+	0.035	3	YES
X	0.043	32	YES
o	0.046	6	YES
□	0.075	5	NO
▽	0.090	6	NO

Title: (unknown) - Fabrication Drawing
Author:
Date: Thu Apr 20 05:41:27 2017 UTC



Board outline is the centerline of this path